
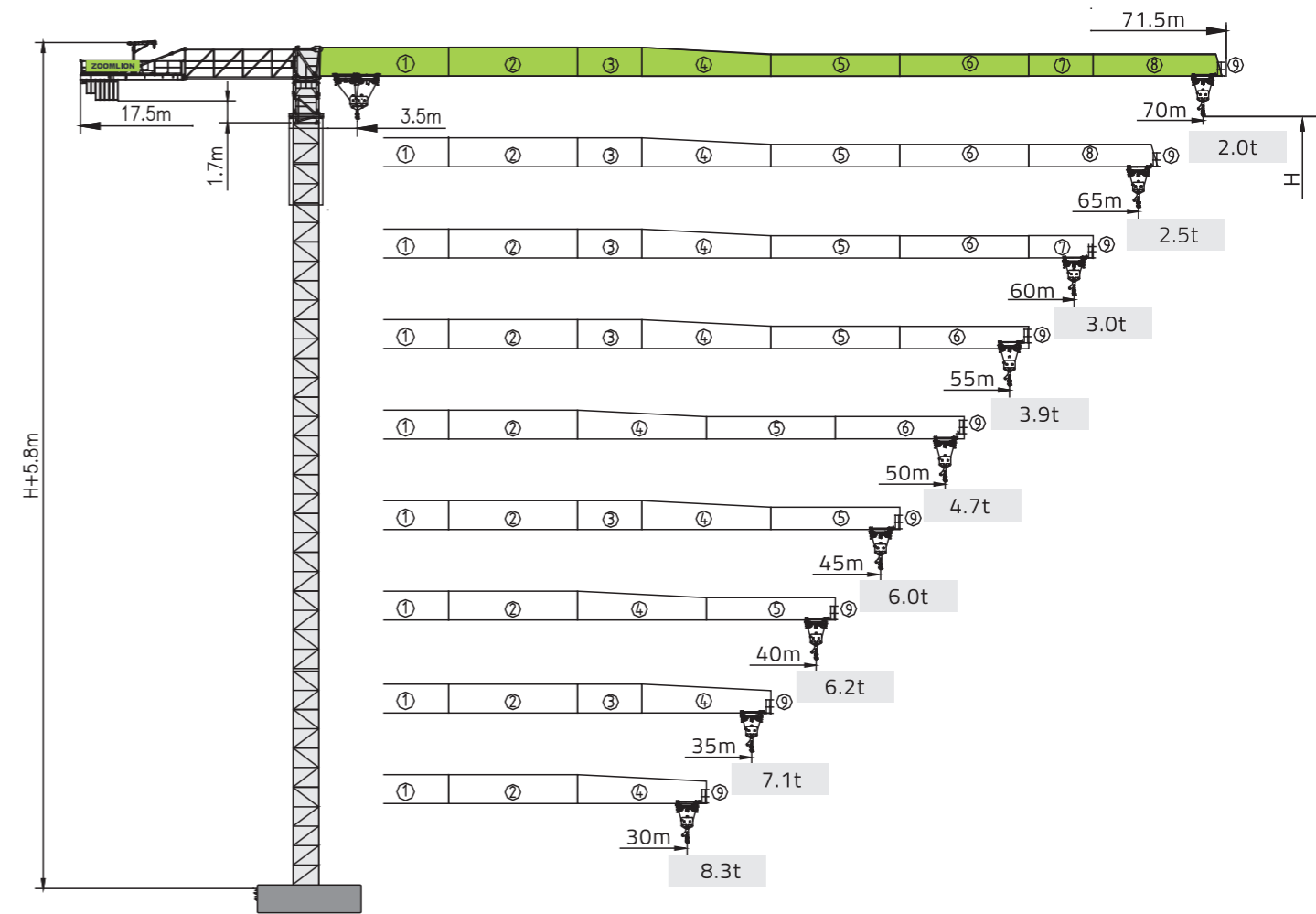




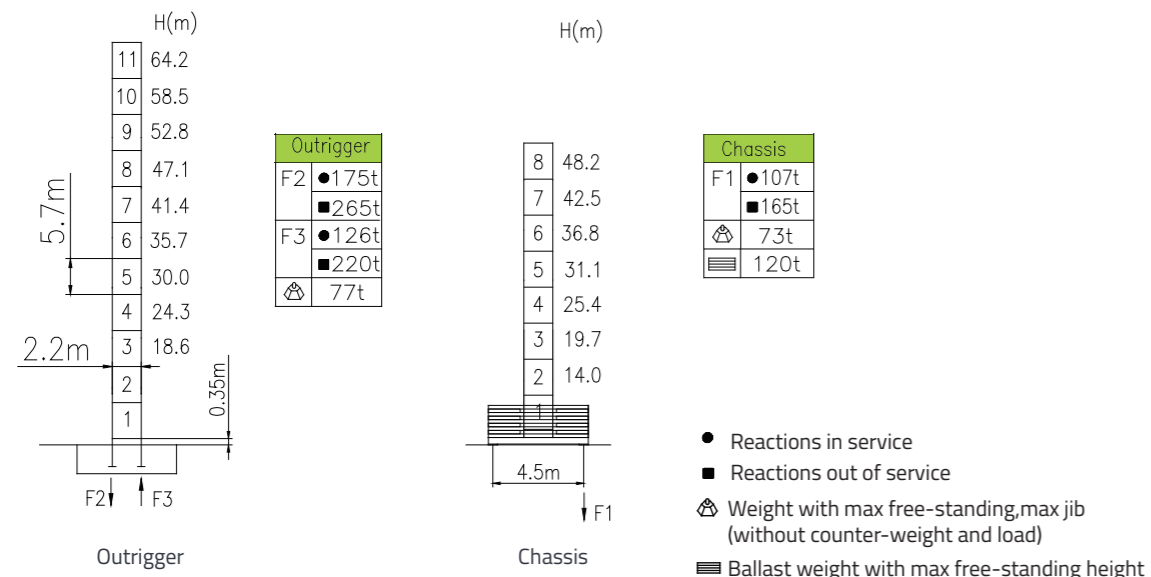
Mechanisms		bd		bd		715m Ⓣ (7 layers)	kW
		IV	V	IV	V		
Hoisting	H60FL30-715	m/min	60	120	30	50	60
		t	6	3	12	6	
Trolleying	T55FC75	m/min	0~100				5.5
Slewing	S145TA-130LB12/14A(a) S145TN-130LB12/14A(a)	r/min	0~0.8 r/min				2x7.5
Travelling	ZA52A-D ZAH52A-D	m/min	0~25				4x5.2
		380V(±10%) 50Hz		80.5+2x5.2 (Excluding Erecting Mechanism)			



		 (Kg)	PHZ3000	PHZ2500	PHZ1300
70m	17.5m	21300	5	2	1
65m	17.5m	20000	5	2	0
60m	17.5m	20000	5	2	0
55m	17.5m	18800	5	1	1
50m	17.5m	17000	4	2	0
45m	17.5m	17500	5	1	0
40m	17.5m	15300	3	2	1
35m	17.5m	14000	3	2	0
30m	17.5m	11500	3	1	0

Mast & reactions

Masts
Reactions



Load diagram

R(m)	Max capacity (m/t)	20	25	30	35	40	45	50	55	60	65	70
70	☺	6.00		5.95	4.95	4.21	3.63	3.17	2.80	2.49	2.22	2.00
	☺☺	8.84	6.70	5.29	4.29	3.55	2.97	2.51	2.14	1.83	1.56	1.34
65	☺	6.00		5.47	4.66	4.03	3.53	3.12	2.79	2.50		
	☺☺	9.76	7.43	5.89	4.81	4.00	3.37	2.87	2.46	2.13	1.84	
60	☺	6.00		5.84	4.98	4.32	3.79	3.36	3.00			
	☺☺	10.42	7.95	6.33	5.18	4.32	3.66	3.13	2.70	2.34		
55	☺	6.00		5.73	4.98	4.39	3.90					
	☺☺	11.94	9.16	7.33	6.04	5.07	4.32	3.73	3.24			
50	☺	6.00		5.33	4.70							
	☺☺	12.00	9.80	7.86	6.49	5.46	4.67	4.04				
45	☺	6.00										
	☺☺	12.00	11.02	8.87	7.35	6.22	5.34					
40	☺	6.00										
	☺☺	12.00	10.99	8.85	7.33	6.20						
35	☺	6.00										
	☺☺	12.00	10.67	8.58	7.10							
30	☺	6.00										
	☺☺	12.00	10.33	8.30								

Anchorage

